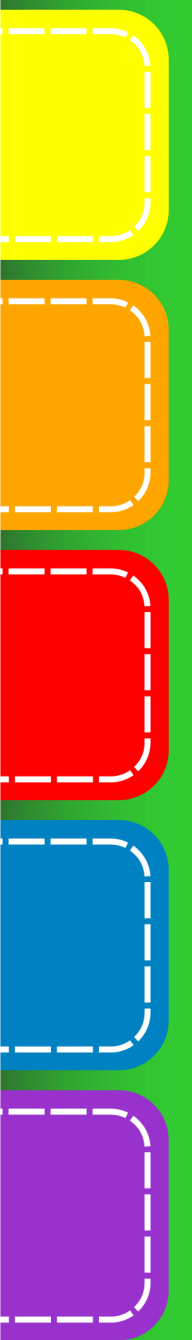


# Utilização das cores

Cores



Cores

POP POP



ROSA



POP POP



ROSA



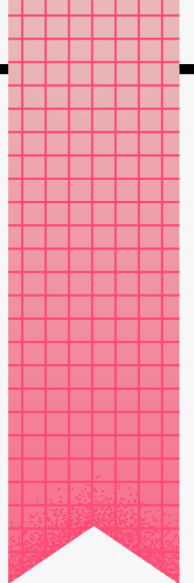
POP POP



MAGENTA



POP POP





**LISTRADO**



**POP POP**





ROSÊ





ORQUÍDEA

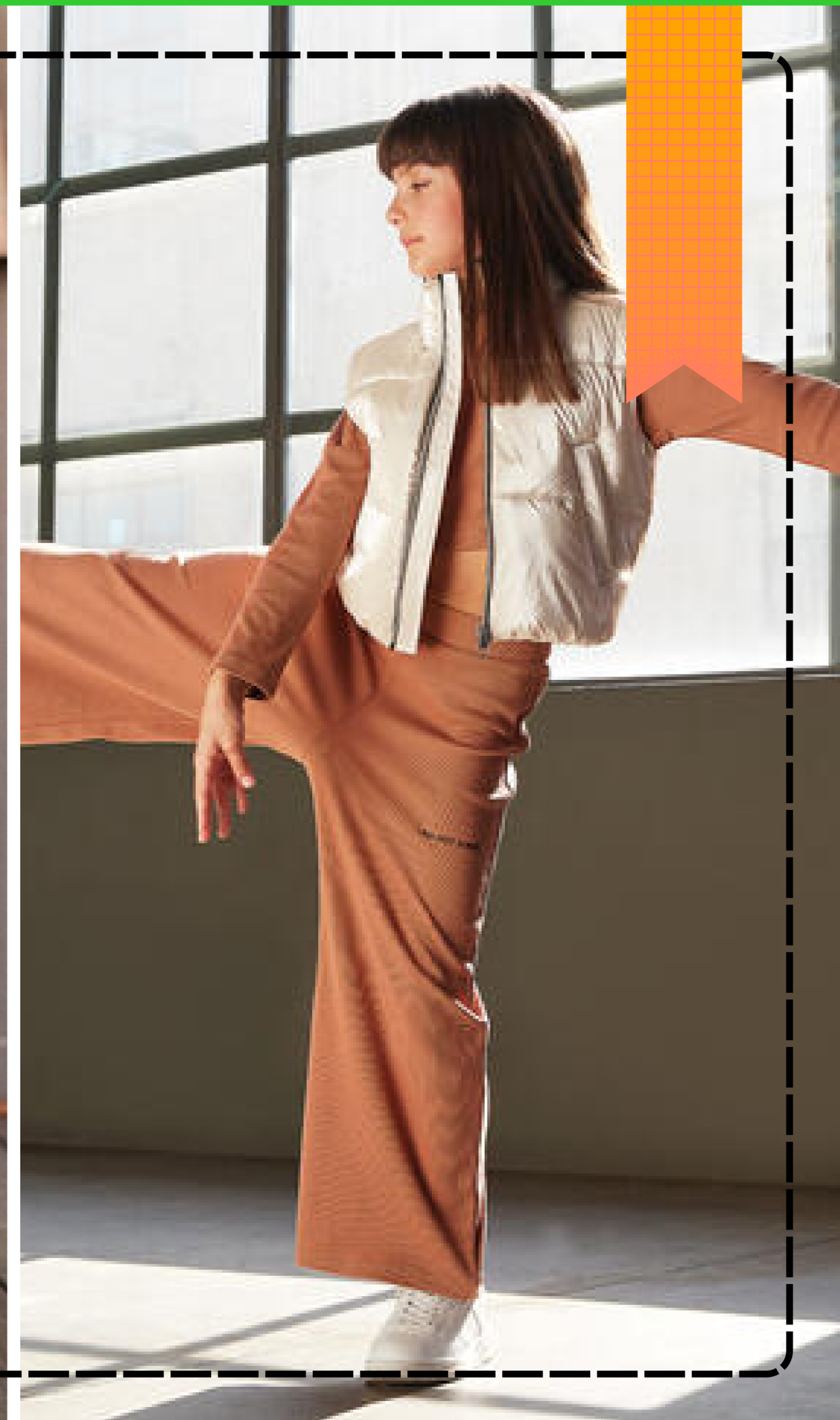


POP POP





APRICOT





VERMELHO



POP POP





VINHO



POP POP



meia calça  
+  
meia 3/4







**AMARELO/MOSTARDA**



**POP POP**





AZUL KLEIN



POP POP





AZUL KLEIN



POP POP

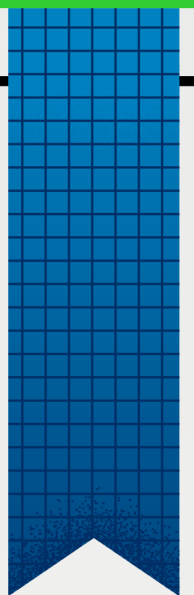




MARINHO



POP POP







LIMA

POP POP

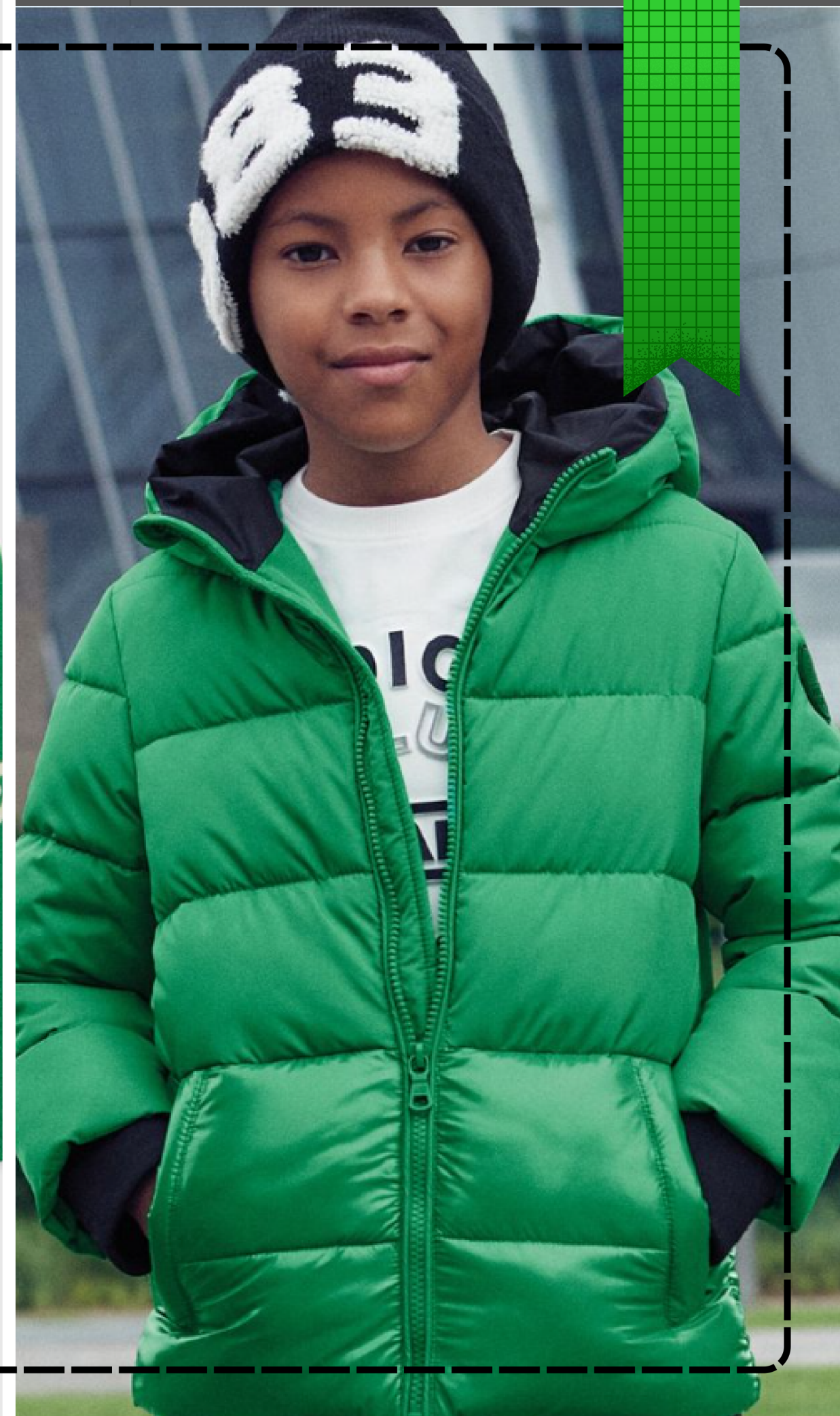




VERDE



POP POP



OLIVA



POP POP

VERDE PETRÓLEO



POP POP







CARAMELO



POP POP





MARROM



POP POP





CAFÉ



POP POP







MARROM+AZUL

POP POP



CINZA



POP POP





PRETO



POP POP





MIX INVERNAL



POP POP

